

Introducing the F Trigger and 4th Valve to Your Low Brass

TMEA 2019

Dr. Benjamin Coy
South Texas College
www.tenorposaune.com

Key points

- Instruments with additional valves tend to have larger bore sizes than student instruments, and they require more air than some younger students can control.
- Bass trombone is a demanding instrument that requires a strong player.
- The additional valve provides access to some lower notes unavailable on smaller instruments.
 - On trombones, the F attachment also allows better technical facility in the low register.
 - On euphoniums and tubas, the 4th valve provides better intonation options.
- Slide positions with the valve are in different places than on the open trombone.
- Fifth position on the valve is roughly the same place as sixth position without the valve.
- The F attachment should not be used above 2nd space C.
- Low F in first position with the F attachment is flat and should not be used.
- Compensating valve systems on the euphonium solve the intonation issues of the 4th valve.
- Tubas in the USA tend to be non-compensating and require alternate valve combinations.

Non-compensating valve combinations (BB \flat Tuba 8vb)

The image displays two staves of musical notation for a BB \flat tuba. The first staff shows various valve combinations and their corresponding notes: 24, 4, 23, 12, 1, 2, 0, No B natural, 1234, 134. The second staff shows combinations: 234, 14, 24, 4, 23, 12, 1, 2, 0, 24, 4.

Additional resources

- Blume, Oskar: *36 Studies for Trombone with F Attachment* (Carl Fischer)
Edwards, Brad: *Bass Trombone Craft* (Brad Edwards)
Fink, Reginald: *Introducing the F Attachment for Trombone* (Accura Music)
Gillis, Lew: *20 Etudes for Bass Trombone with "F" Attachment* (Southern Music)
Ostrander, Allen: *Method for Bass Trombone and F-Attachment for Tenor Trombone* (Carl Fischer)

Tuning drones

Using an audible drone rather than an electronic tuner trains a musician's ear to adjust to context, which promotes adaptability in performance situations.

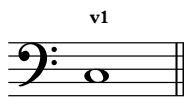
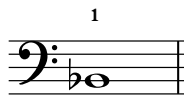
www.tuningdrones.com - use promo code "TMEA2019" for 6 months of free access

Valved positions on tenor and bass trombones

All exercises should be played slowly with a tuner or tuning drone



Tuning Notes



Normal
B \flat positions

1 2 3 4 5 6 7

Trigger
F positions

v1 v2 v3 v4 v5 v6

2nd Valve
G \flat positions

G \flat 1 G \flat 2 G \flat 3 G \flat 4 G \flat 5 G \flat 6

Double Valve
D positions

D1 D2 D3 D4 D5

Adjusting between B \flat and F positions on the tenor and bass trombones

Adjusting between B \flat , F, and D positions on the bass trombone

Using the F attachment or 4th valve in context

Notes to be played on the trombone's F attachment are marked "V."

Notes to be played with the euphonium's 4th valve are marked "4."

The image displays three sets of musical exercises, labeled 1, 2, and 3, each consisting of three staves. The first staff of each set is for the trombone, and the subsequent two are for the euphonium. Exercise 1 is in the key of B-flat major and 2/4 time. Exercise 2 is in the key of B-flat major and 2/4 time. Exercise 3 is in the key of B-flat major and 2/4 time. The exercises consist of eighth and sixteenth note patterns, often with slurs. Above the notes, '4' indicates the use of the 4th valve on the euphonium, and 'V' indicates the use of the F attachment on the trombone. The exercises are designed to help players become comfortable with these specific playing techniques in various musical contexts.

Bordogni etude performed 8vb for valve facility

Notes to be played on the trombone's F attachment are marked "V."

Notes to be played on the euphonium's 4th valve are marked "4."

Andante cantabile

p *sempre legato*

a tempo

p dolce

p

rall.